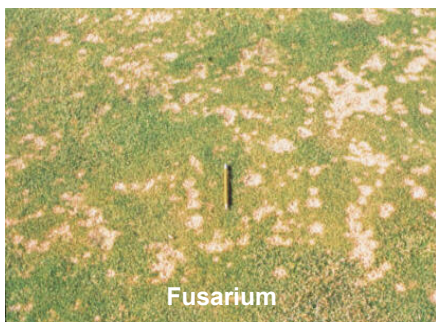


Fusarium (and other fungal diseases)



Fusarium



Take all Patch



Red Thread

Disease Management	
Control Thatch	✓
Compaction Relief	✓
Irrigation Management	✓
Remove dew	✓
Sarrell Rolling	✓
Review Top Dressing Program	✓
Regular Aeration	✓
Soil Fertility Management	✓

Fusarium Disease

Symptoms; In the early stages of the disease there may be small (10-25mm), water soaked orange/brown patches that feel slimy to touch. These small patches are often surrounded by white or pink fungal mycelia, especially in humid conditions. As the disease progresses the patches grow larger and may spread to form large, irregular areas of damaged turf. In advanced cases there will be large, irregular areas of turf with orange/brown rings peripherally and pale, damaged grass in the centre. Fusarium can be a devastating disease leaving large scars on the turf which will require major renovation to bring back to playable condition.

Favourable Conditions for Fusarium Development

All grass species are susceptible but annual meadow grass is very susceptible to attack. Disease outbreaks can occur during any cool, wet period but are more prevalent (and damaging) in the winter months. If there are shaded or badly drained areas with poor air circulation due to trees etc, you should monitor your green carefully in winter as the disease can spread very rapidly to devastating effect. Poor drainage due to compaction, excessive thatch, smothering by top-dressing, excessive nitrogen and a sward dominated by annual meadow grass all leave your green more open to attack.

What can be done:

Although Fusarium is the most common and damaging of turf diseases on greens in the UK, the general advice for prevention of most of the fungal diseases is similar. By following the advice below and the checklist in the left panel you should minimise the effects of disease outbreaks on your green.

Cultural Practices: Switch green to remove dew, improve drainage, control nitrogen inputs, thatch control, regular aeration to keep surface dry and airy, avoid overly alkaline top-dressing materials, avoid heavy top-dressings in autumn or early spring, improve air movement across and around green and improve sward to favour finer fescue and bent grasses and discourage annual meadow grass.

Chemical Control: Effective fungicides are readily available in the UK, but you should always remember that these only cure symptoms of other underlying problems. Although fungicides are a crucial part of your approach, you should be following a program that steadily improves the health of your green and so reduce disease outbreaks. Over reliance on chemical control can severely limit your chances of success in achieving this.

Greenmaster Ltd
The E Centre
Cooperage Way
Alloa, FK10 3LP
Scotland

Phone: 01259 272195

Fax: 01259 208146

E-mail:

info@greenmaster.co.uk

www.greenmaster.co.uk

John Quinn, Master Greenkeeper.